

iCLASS Credentials

iCLASS Card - 200 / 210

iCLASS cards can be ordered either with both SIO and iCLASS programming or iCLASS programming only. Ensure each required option has been checked with the appropriate choice to fulfill a completed order form.

Base Model: 200 Standard PVC 210 Composite 40% Polyester / PVC*

iCLASS Memory Size and Allocation (Select one option)

- 0** - 2k Bits (256 Bytes) with 2 Application Areas
- 3** - 32k Bits (4K Bytes) Application areas 16k/2+16k/1
- 4** - 32k Bits (4K Bytes) Application areas 16k/16+16k/1

iCLASS Programming (Select one option)

- HP** - Programmed with Security Identity Object (SIO) and standard iCLASS Access Control Application (**Recommended**)¹
- P** - Programmed with standard iCLASS Access Control Application
- C** - Unprogrammed, for use with iCLASS SE Encoder

Front Packaging (Select one option)

- G** - Plain White with Gloss Finish
- C** - Custom Artwork with Gloss Finish - Specify Custom Artwork Number²

Back Packaging (Select one option)

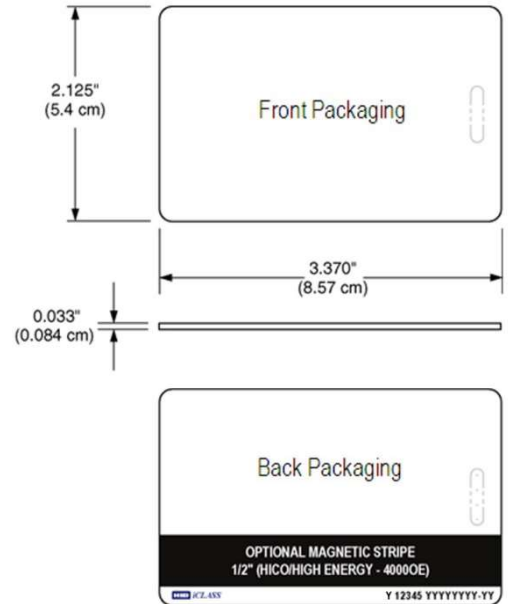
- G** - Plain White with Gloss Finish³
- C** - Custom Artwork with Gloss Finish - Specify Custom Artwork Number²
- 1** - Plain White with Gloss Finish with Magnetic Stripe³
- 3** - Custom Artwork with Gloss Finish with Magnetic Stripe - Specify Custom Artwork Number²

Card Numbering⁴ (Select one option)

- M** - Sequential Matching Encoded/Printed (Inkjetted)⁸
- N** - No Printed Card Numbering
- S** - Sequential Encoded/Sequential Non-Matching Printed (Inkjetted)⁷
- R** - Random Encoded/Non-Matching Sequential Printed (Inkjetted)⁷
- A** - Sequential Matching Encoded/Printed (Laser Engraved)
- B** - Sequential Encoded/Sequential Non-Matching Printed (Laser Engraved)
- C** - Random Encoded/Non-Matching Sequential Printed (Laser Engraved)

Slot Punch⁵ (Select one option)

- N** - No slot punch, This card can be slotted vertically, Printed Vertical Slot Indicators
- B** - No Slot Punch, This card can be slotted horizontally, Printed Horizontal Slot Indicators⁷
- V** - Vertical Slot Punch
- H** - Horizontal Slot Punch⁶



Y = iCLASS Programming
12345 = Card ID Number
YYYYYYYY-YY = Sales Order Number